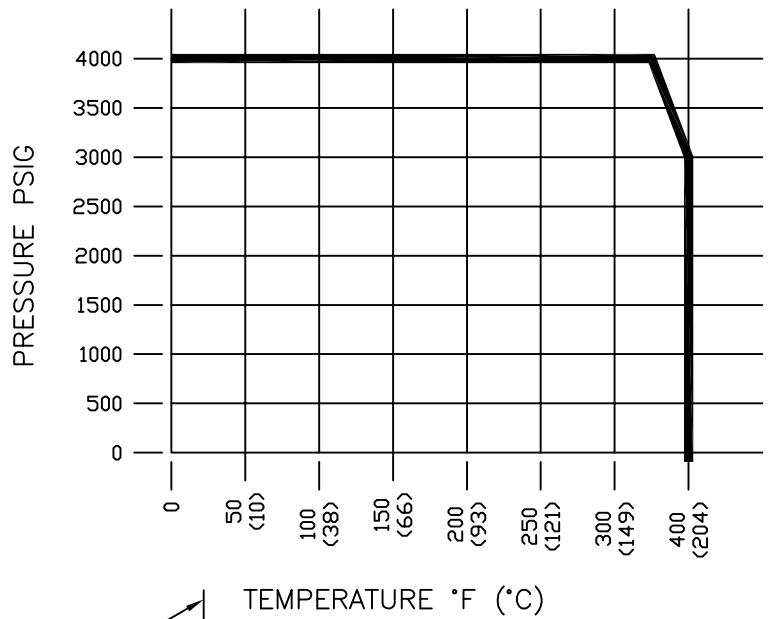


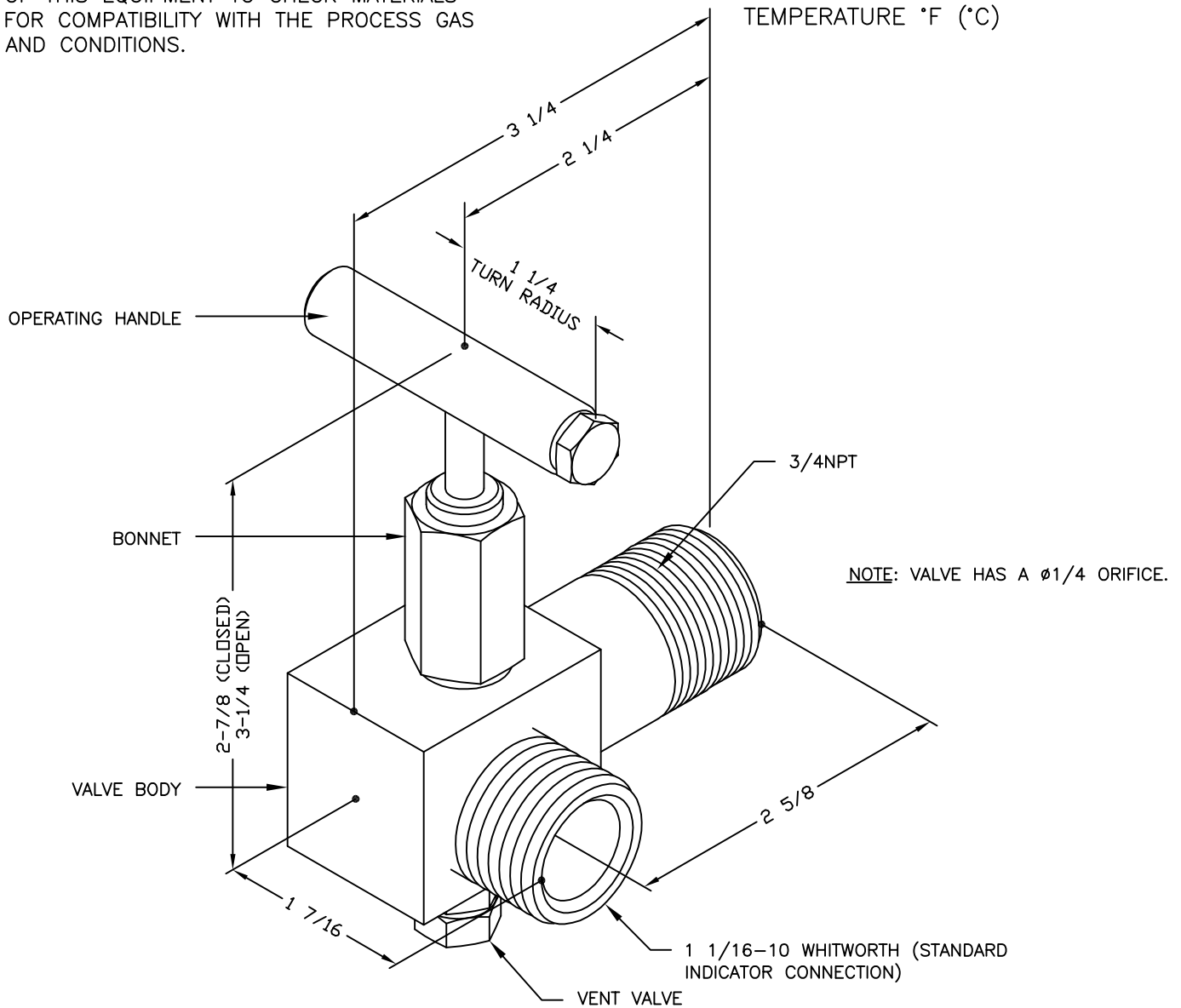
MATERIALS LIST

VALVE BODY: ASTM A276, A479 316L
BONNET: ASTM A276 316
VALVE STEM: ASTM A276 316
STEM SEAL: PERFLOURINATED ELASTOMER
SEAT: PEEK
VENT VALVE: ASTM A276 316
OPERATING HANDLE: ASTM A108
VALVE CAP & PLUG (NOT ILLUSTRATED):
VALVE CAP: ASTM A108
VALVE CAP PLUG: ASTM A276 316

WEIGHT: 1.7 LBS



NOTE:
 IT IS THE RESPONSIBILITY OF THE END USER
 OF THIS EQUIPMENT TO CHECK MATERIALS
 FOR COMPATIBILITY WITH THE PROCESS GAS
 AND CONDITIONS.



KIENE DIESEL ACCESSORIES

325 SOUTH FAIRBANKS STREET, ADDISON, ILLINOIS, 60101

DATA SHEET - 90° NEEDLE-TYPE INDICATOR VALVE, 316SS CONSTRUCTION, 3/4NPT, $\phi 1/4$ ORIFICE, WITH VENT VALVE

CURRENT REVISION: * DATE: 2/22/13 DRAWING NAME: KN-23B-90 DATA SHEET