

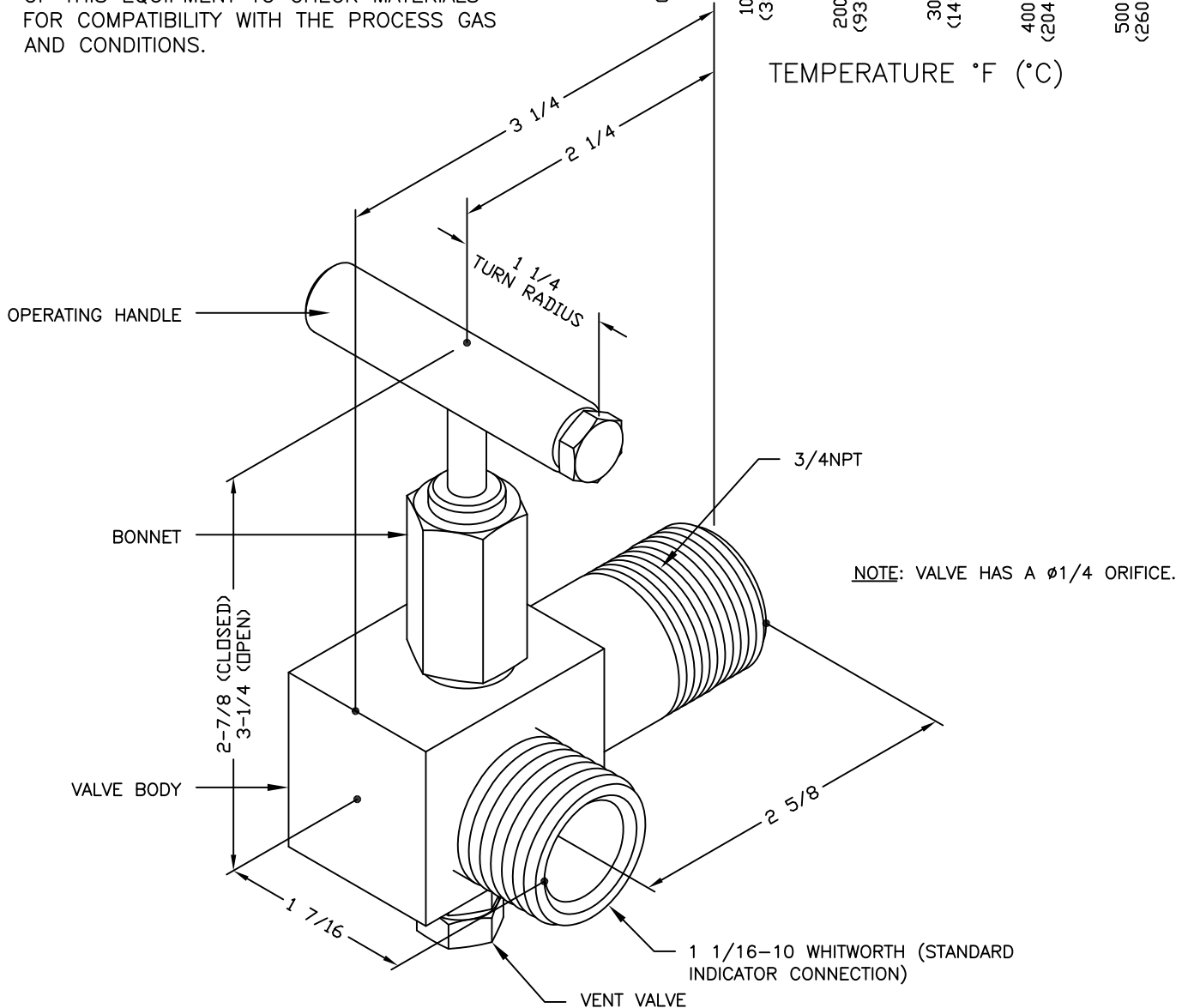
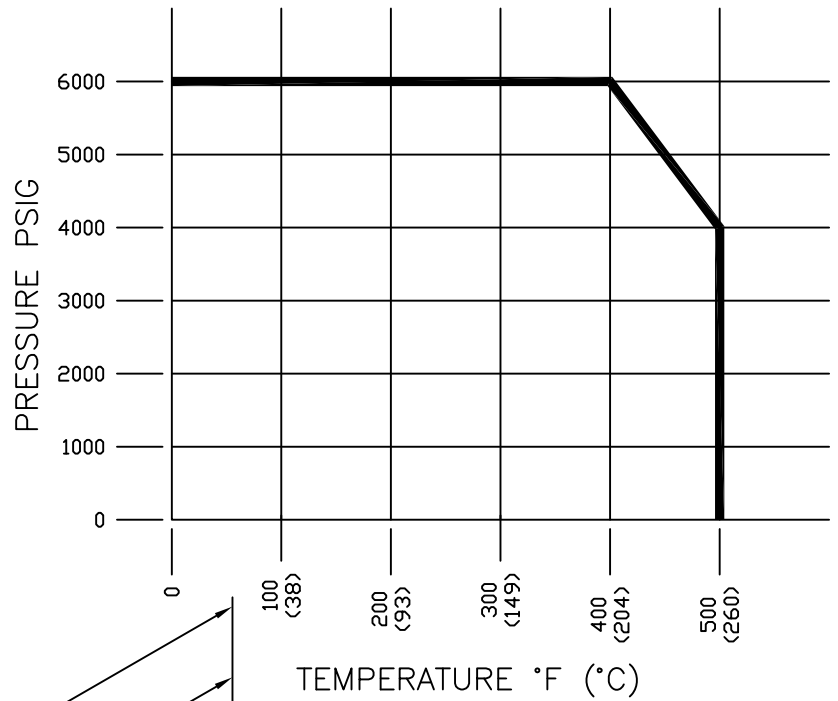
MATERIALS LIST

- VALVE BODY: ASTM A276, A479 316L
- VALVE STEM: ASTM A276 316
- STEM SEAL: PERFLOURINATED ELASTOMER
- SEAT: REINFORCED PEEK
- BONNET: ASTM A276 316
- VENT VALVE: ASTM A276 316
- OPERATING HANDLE: ASTM A108
- VALVE CAP & PLUG (NOT ILLUSTRATED):
- VALVE CAP: ASTM A108
- VALVE CAP PLUG: ASTM A276 316

WEIGHT: 1.7 LBS

NOTE:

IT IS THE RESPONSIBILITY OF THE END USER OF THIS EQUIPMENT TO CHECK MATERIALS FOR COMPATIBILITY WITH THE PROCESS GAS AND CONDITIONS.



<h2 style="margin: 0;">KIENE DIESEL ACCESSORIES</h2> <p style="margin: 0;">325 SOUTH FAIRBANKS STREET, ADDISON, ILLINOIS, 60101</p>			
<p style="margin: 0;">DATA SHEET, 90° NEEDLE-TYPE INDICATOR VALVE, STAINLESS STEEL CONSTRUCTION, 3/4NPT(M) INLET</p>			
CURRENT REVISION: *	DATE: 10/14/16	DRAWING:	KN-43B-90 DATA SHEET